



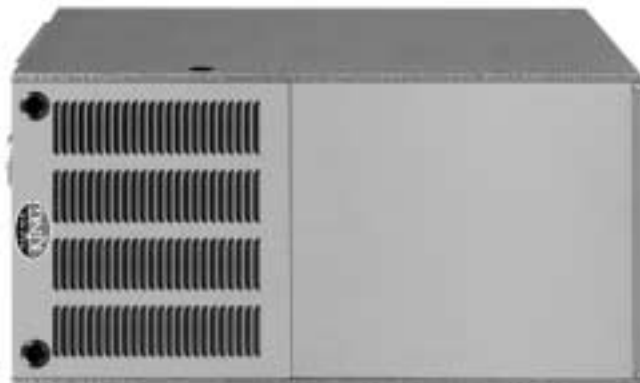
80 PLUS A.F.U.E.† UPFLOW/HORIZONTAL GAS FURNACES

Features

- The WeatherKing® line of upflow/horizontal gas furnaces are designed for utility rooms, closets, alcoves or attics.
- Textured galvanized steel cabinet with painted access doors.
- The design is certified by the CSA.
- Patented heat exchanger, constructed of both stainless and aluminized steel for the maximum in corrosion resistance.
- Low profile "34 inch" design is light and easy to handle, and leaves room for optional equipment.
- Convertible from upflow to horizontal left or right without field conversion.
- Left or right side gas and electric inlet connections with quick, simple change.
- Features hot surface ignition equipped with remote sense, and an integrated board with electronic air cleaner hookups.
- A slow-open gas valve and a specially designed draft inducer motor.
- Grab-holes in doors to aid in easy door removal and replacement.

A variety of cooling coils and plenums designed to use with WeatherKing gas furnaces are available as optional accessories.

†A.F.U.E. (Annual Fuel Utilization Efficiency) calculated in accordance with Department of Energy test procedures.

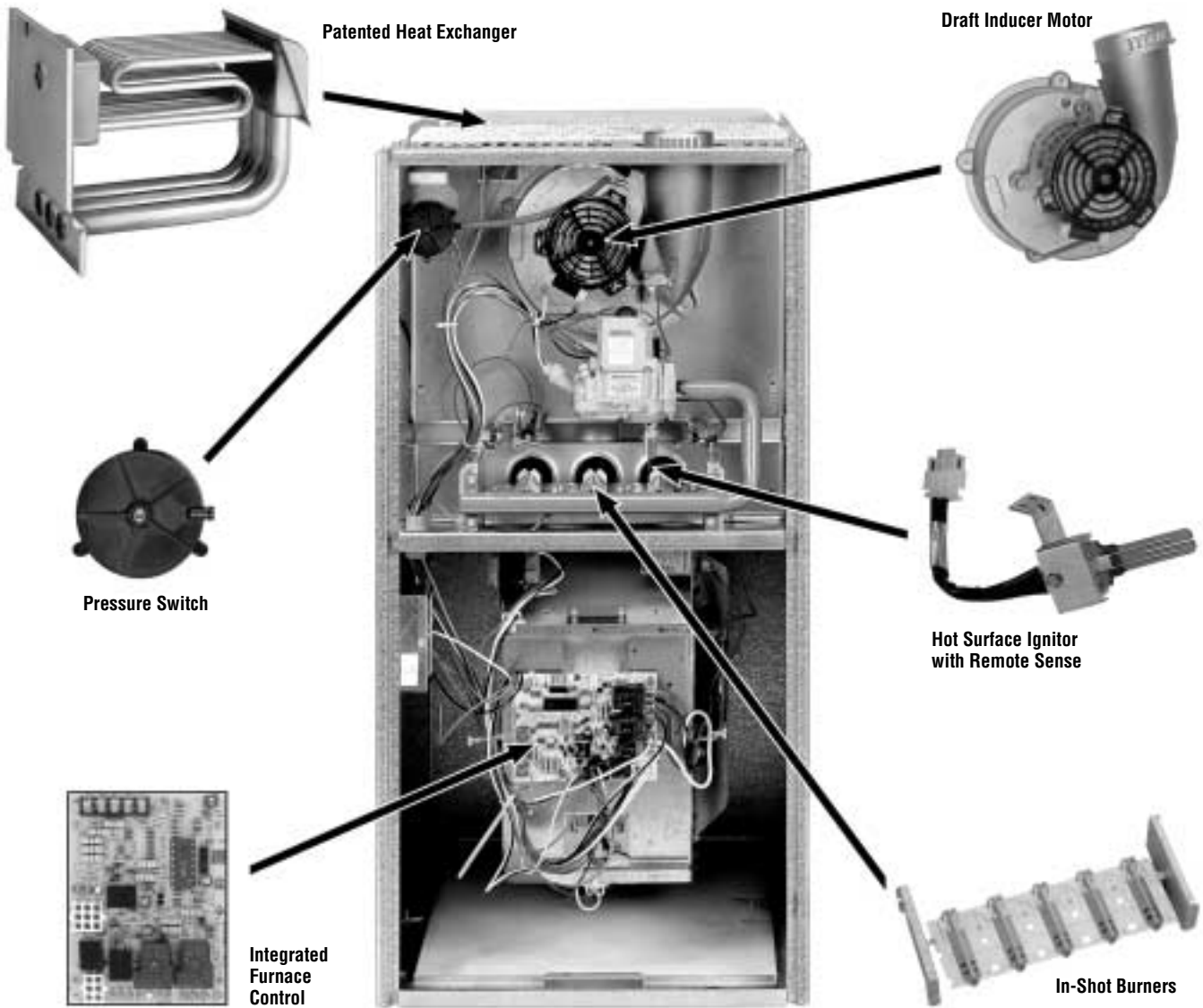


80PJ SERIES
Models with Input Rates from
50,000 to 150,000 BTU/HR
[15 to 44 kW]





WEATHERKING 80 PLUS UPFLOW GAS FURNACE



STANDARD EQUIPMENT

Completely assembled and wired; induced draft; pressure switch; redundant main gas control; blower compartment door safety switch; solid state time on/time off blower control; limit control; manual shut-off valve, pressure regulator for natural and L.P. (propane) gas; transformer; direct drive multi-speed blower motor. Furnaces are equipped with cooling/heating relay and transformer (40VA) ready for air conditioning applications. (Please note: a thermostat is not included as standard equipment.) Control diagnostics.

OPTIONAL EQUIPMENT

Twinning Kit Fossil Fuel Kit

NOTE: Furnace is not listed for use with fuels other than natural or L.P. (propane) gas.

The complete terms of limited and other warranties are available at our sales office, or through local installer.

All models can be converted by a qualified distributor or local service dealer to use L.P. (propane) gas without changing burners. Factory approved kits must be used to convert from natural to L.P. (propane) gas and may be ordered as optional accessories from a parts distributor.

For L.P. (propane) operation, refer to Conversion Kit Index Form.

NOTE: For natural and L.P. (propane) gas models, standard hot surface ignition is 100% safety lockout type.

WARNING
THIS FURNACE IS NOT APPROVED
OR RECOMMENDED
FOR USE IN MOBILE HOMES

BEFORE PURCHASING THIS APPLIANCE, READ IMPORTANT ENERGY COST AND EFFICIENCY INFORMATION AVAILABLE FROM YOUR RETAILER.

PHYSICAL DATA AND SPECIFICATIONS

MODEL NUMBERS 80PJ SERIES	80PJ05EAR01 80PJ05NAR01	80PJ07EBR01 80PJ07NBR01	80PJ10ECR01	80PJ10NDR01	80PJ12EDR01 80PJ12NDR01	80PJ15EDR01 80PJ15NDR01
Input-BTU/Hr [kW] ②	50,000 [15]	75,000 [22]	100,000 [29]	100,000 [29]	125,000 [37]	150,000 [44]
Heating Capacity BTU/Hr [kW] ①	41,000 [12]	60,000 [18]	80,000 [23]	80,000 [23]	99,000 [29]	119,000 [35]
Heat Ext. Static Pressure [kPa]	.10 [.025]	.12 [.029]	.15 [.037]	.15 [.037]	.20 [.05]	.20 [.05]
Blower (D x W) [mm]	11 x 6 [279 x 152]	11 x 7 [279 x 178]	11 x 10 [279 x 254]	11 x 10 [279 x 254]	11 x 10 [279 x 254]	11 x 10 [279 x 254]
Motor H.P.–Speed– PSC Type [W]	1/2-4-PSC [373]	1/2-3-PSC [373]	1/2-3-PSC [373]	3/4-3-PSC [560]	3/4-3-PSC [560]	3/4-3-PSC [560]
Motor Full Load Amps	6.8	7.9	7.9	9.5	9.5	9.5
Heating Speed	Med-Low	Med	Med	Low	Low	Low
Cooling Speed	High	High	High	Med	Med	Med
Cooling CFM @ .5" E.S.P. (Nominal) [L/s]	1200 [566]	1600 [755]	1845 [871]	2060 [922]	2115 [998]	2080 [982]
Max. E.S.P. (In. W.C.) [kPa]	.50 [.12]	.50 [.12]	.50 [.12]	.50 [.12]	.50 [.12]	.50 [.12]
Temperature Rise Range °F [°C]	25-55 [13.9-30.6]	25-55 [13.9-30.6]	40-70 [22.2-38.9]	40-70 [22.2-38.9]	35-65 [19.4-36.1]	50-80 [27.8-44.4]
Max. Outlet Air Temp. °F [°C]	155 [68.3]	155 [68.3]	170 [76.6]	170 [76.6]	180 [82.2]	190 [87.7]
Standard Filter (In.) [mm]	15 ³ / ₄ x 25 [400 x 635]	15 ³ / ₄ x 25 [400 x 635]	19 ¹ / ₄ x 25 [489 x 635]	19 ¹ / ₄ x 25 [489 x 635]	22 ³ / ₄ x 25 [578 x 635]	22 ³ / ₄ x 25 [578 x 635]
AFUE–H.S.I. Models ①	81.4%	80.5%	80.0%	80.0%	80.0%	80.0%
California Seasonal Efficiency– H.S.I./No _x Models ①	74.9/75.4	74.7/75.3	73.9/74.5	73.9/74.5	74.2/74.2	74.7/74.7

NOTES: All models are 115V, 60HZ, 1 Ph, Gas connection size for all models is 1/2" [12 mm] N.P.T.

① In accordance with D.O.E. test procedures.

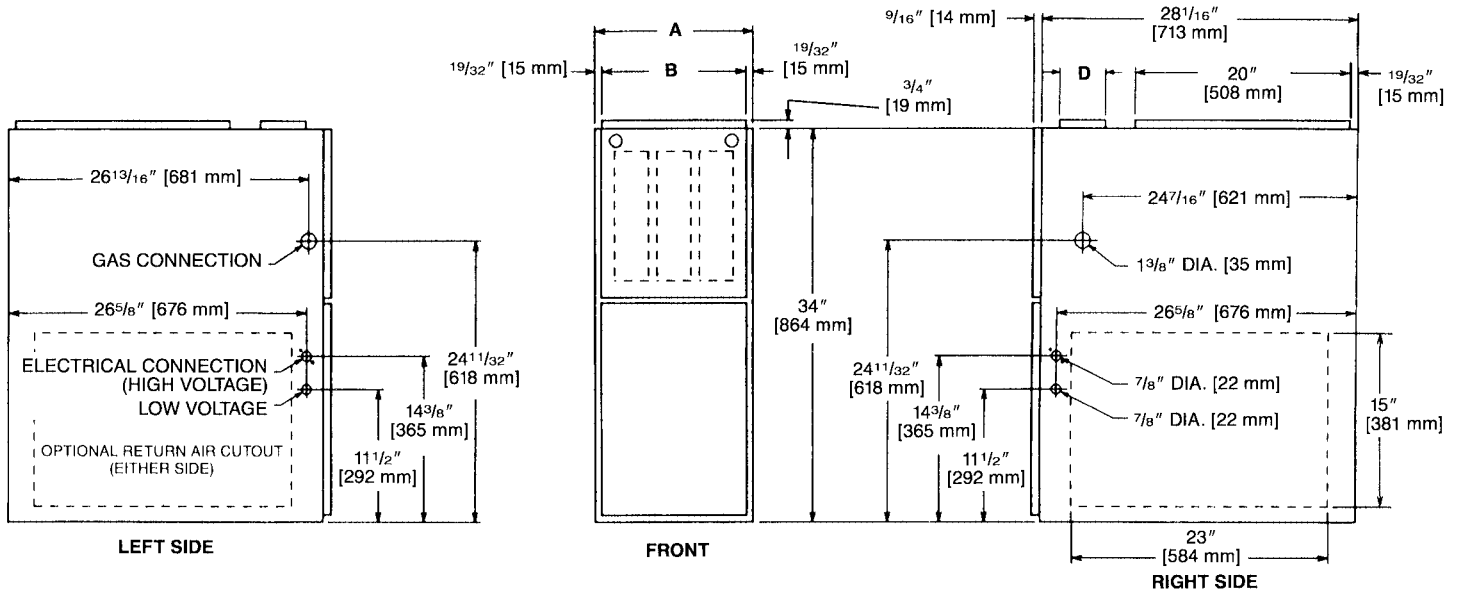
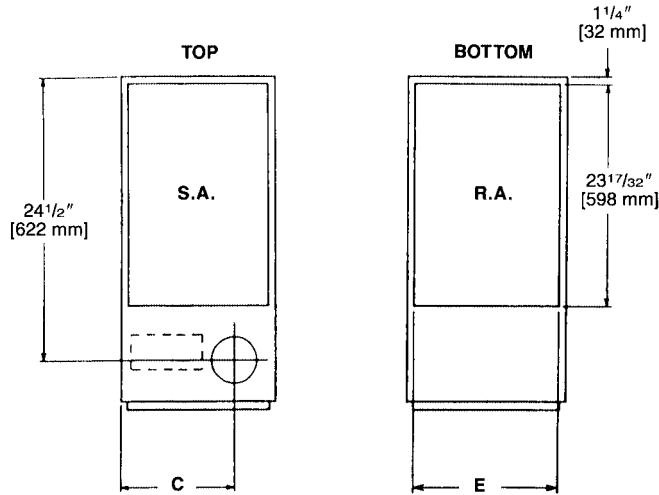
② See Conversion Kit Index Form for high altitude derate.

MODEL IDENTIFICATION—UPFLOW/HORIZONTAL MODELS

<u>80</u>	<u>PJ</u>	<u>05</u>	—	<u>E</u>	<u>A</u>	<u>R</u>	<u>01</u>
Efficiency 80 = 80 Plus	Model Designation	Heating Input BTU/HR [kW] 05 = 50,000 [15] 07 = 75,000 [22] 10 = 100,000 [29] 12 = 125,000 [37] 15 = 150,000 [44]		Ignition E = Electric Ignition N = Electric Ignition NOx	Variations Blower Designation [mm] Motor H.P. A = Standard Cabinet 11 x 6 [279 x 152] 1/2 H.P. – 4 Speed B = Standard Cabinet 11 x 7 [279 x 178] 1/2 H.P. – 3 Speed C = Standard Cabinet 11 x 10 [279 x 254] 1/2 H.P. – 3 Speed D = Standard Cabinet 11 x 10 [279 x 254] 3/4 H.P. – 3 Speed	Fuel Code R = 80 Plus Natural Gas	W E A T H E R K I N G

[] Designates Metric Conversions

UPFLOW DIMENSIONS



DIMENSIONS AND CLEARANCE TO COMBUSTIBLE MATERIAL (INCHES) [mm]

MODEL 80PJ	A	B	C	D	E	REDUCED CLEARANCE (IN.) [mm]					SHIP. WGT. (LBS.) [Kg]	
						LEFT SIDE	RIGHT SIDE	BACK	TOP	FRONT		VENT
05	14 [356]	12 ²⁷ / ₃₂ [326]	10 ³ / ₈ [263]	①	11 1/2 [292]	0	4 [102] ②	0	1 [25]	3 [76]	6 [152] ③	85 [38.6]
07	17 1/2 [445]	16 ¹¹ / ₃₂ [415]	12 1/8 [308]	①	15 [381]	0	3 [76] ②	0	1 [25]	3 [76]	6 [152] ③	105 [47.6]
10	21 [533]	19 ²⁷ / ₃₂ [504]	13 ⁷ / ₈ [352]	①	18 1/2 [470]	0	0	0	1 [25]	3 [76]	6 [152] ③	120 [54.4]
12	24 1/2 [622]	23 ¹¹ / ₃₂ [593]	15 ⁵ / ₈ [397]	①	22 [559]	0	0	0	1 [25]	3 [76]	6 [152] ③	140 [63.5]
15	24 1/2 [622]	23 ¹¹ / ₃₂ [593]	15 ⁵ / ₈ [397]	①	22 [559]	0	0	0	1 [25]	3 [76]	6 [152] ③	150 [68]

NOTES: ① May require a 3" [76 mm] to 4" [102 mm] or 3" [76 mm] to 5" [127 mm] adapter.

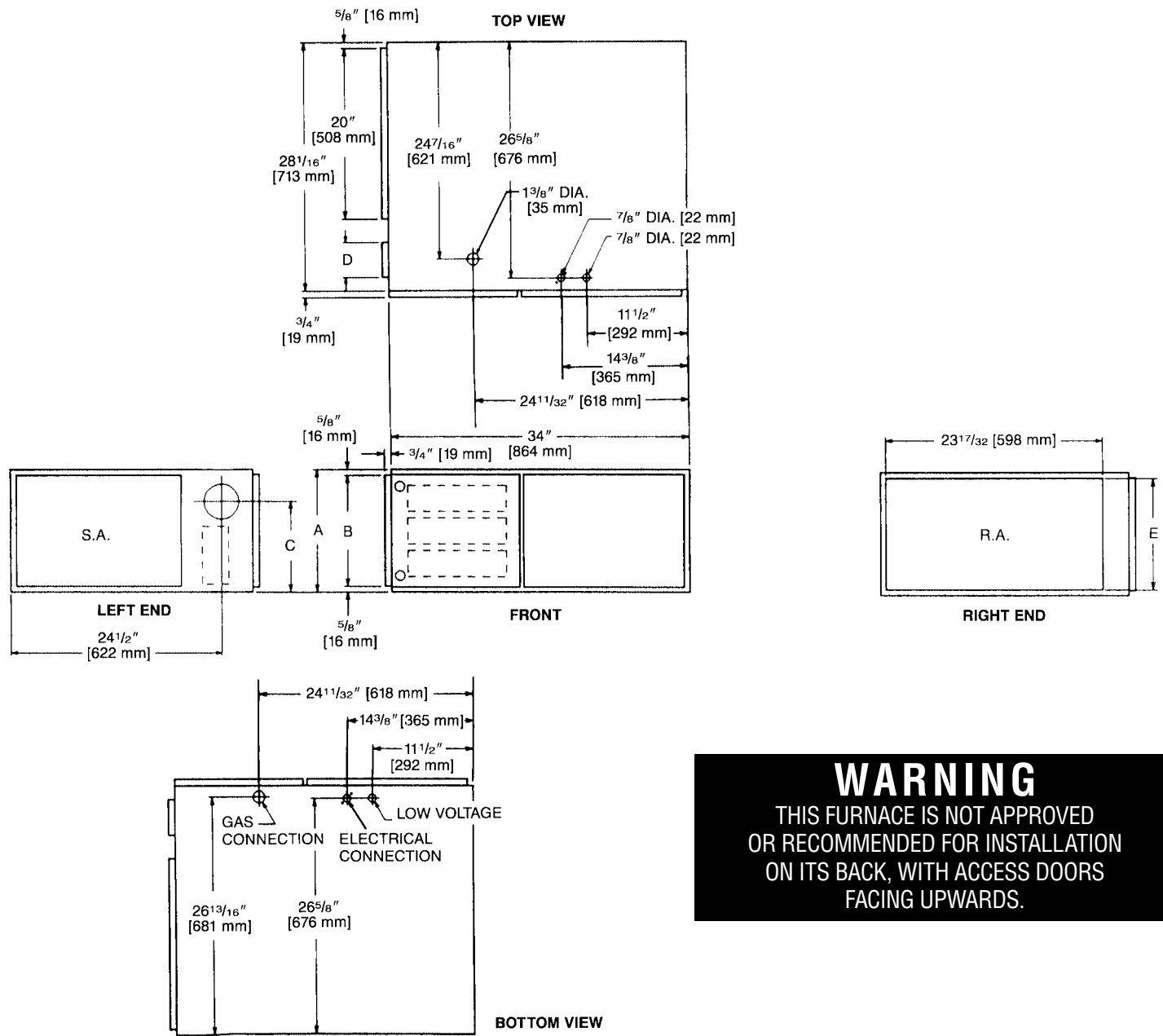
② May be 0" [0 mm] with type B vent.

③ May be 1" [25 mm] with type B vent.

Furnaces must be vented in accordance with ANSI Z21.47-latest edition venting table guidelines and in accordance with local codes.

[] Designates Metric Conversions

HORIZONTAL DIMENSIONS



WARNING
 THIS FURNACE IS NOT APPROVED
 OR RECOMMENDED FOR INSTALLATION
 ON ITS BACK, WITH ACCESS DOORS
 FACING UPWARDS.

DIMENSIONS AND CLEARANCE TO COMBUSTIBLE MATERIAL (INCHES) [mm]

MODEL 80PJ	A	B	C	D	E	REDUCED CLEARANCE (IN.) [mm]						
						LEFT SIDE	RIGHT SIDE	BACK	TOP	FRONT	VENT	SHIP. WGTS. (LBS.) [Kg]
05	14 [356]	12 27/32 [326]	10 3/8 [263]	Ⓚ	11 1/2 [292]	0	4 [102] ②	0	1 [25]	3 [76]	6 [152] ③	85 [38.6]
07	17 1/2 [445]	16 11/32 [415]	12 1/8 [308]	Ⓚ	15 [381]	0	3 [76] ②	0	1 [25]	3 [76]	6 [152] ③	105 [47.6]
10	21 [533]	19 27/32 [504]	13 7/8 [352]	Ⓚ	18 1/2 [470]	0	0	0	1 [25]	3 [76]	6 [152] ③	120 [54.4]
12	24 1/2 [622]	23 11/32 [593]	15 5/8 [397]	Ⓚ	22 [559]	0	0	0	1 [25]	3 [76]	6 [152] ③	140 [63.5]
15	24 1/2 [622]	23 11/32 [593]	15 5/8 [397]	Ⓚ	22 [559]	0	0	0	1 [25]	3 [76]	6 [152] ③	150 [68]

NOTES: ① May require a 3" [76 mm] to 4" [102 mm] or 3" [76 mm] to 5" [127 mm] adapter.

② May be 0" [0 mm] with type B vent.

③ May be 1" [25 mm] with type B vent.

Furnaces must be vented in accordance with ANSI Z21.47-latest edition venting table guidelines and in accordance with local codes.

[] Designates Metric Conversions

ACCESSORIES—UPFLOW/HORIZONTAL

RXPF-F01 and F02

FOSSIL FUEL KIT—is for use with WeatherKing Heat Pumps and warm air furnaces. RXPF-F02 meets TVA requirements.

RXGP-F03

TWINNING KIT—is for use with WeatherKing Gas Furnaces for parallel operation requirements.

WARNING: IMPORTANT NOTICE

A SOLID METAL BASE PLATE (SEE TABLE) MUST BE IN PLACE WHEN THE FURNACE IS INSTALLED WITH SIDE OR REAR AIR RETURN DUCTS. FAILURE TO INSTALL A BASE PLATE COULD CAUSE PRODUCTS OF COMBUSTION TO BE CIRCULATED INTO THE LIVING SPACE AND CREATE POTENTIALLY HAZARDOUS CONDITIONS.

FURNACE WIDTH IN. [mm]	SOLID BOTTOM KIT NO.	BASE PLATE NO.	BASE PLATE SIZE IN. [mm]
14 [356]	RXGB-D14	AE-61874-01	11 ⁵ / ₈ x 23 ⁹ / ₁₆ [295 x 598]
17 ¹ / ₂ [445]	RXGB-D17	AE-61874-02	15 ¹ / ₈ x 23 ⁹ / ₁₆ [384 x 598]
21 [533]	RXGB-D21	AE-61874-03	18 ⁵ / ₈ x 23 ⁹ / ₁₆ [473 x 598]
24 ¹ / ₂ [622]	RXGB-D24	AE-61874-04	25 ⁵ / ₈ x 23 ⁹ / ₁₆ [651 x 598]

HIGH ALTITUDE:

For installations at 8000 ft. or above, an orifice change is required. Reference Conversion Kit Index Form for orifice size requirements.

[] Designates Metric Conversions

GENERAL TERMS OF LIMITED WARRANTY

WeatherKing will furnish a replacement for any part of this product which fails in normal use and service within the applicable period stated, in accordance with the terms of the limited warranty.

For Complete Details of the Limited Warranty, Including Applicable Terms and Conditions, See Your Local Installer or visit www.weatherking.com.

Gas Heat Exchanger Limited WarrantyTwenty (20) Years
Any Other PartFive (5) Years

BLOWER PERFORMANCE DATA—UPFLOW MODELS

MODEL NUMBER 80PJ SERIES	BLOWER SIZE [mm]	MOTOR H.P. [W]	BLOWER SPEED	CFM [L/s] AIR DELIVERY EXTERNAL STATIC PRESSURE INCHES [kPa] WATER COLUMN						
				.1 [.02]	.2 [.05]	.3 [.07]	.4 [.10]	.5 [.12]	.6 [.15]	.7 [.17]
				05EAR01 05NAR01	11 x 6 [279 x 152]	1/2 [373]	LOW MED-LO MED-HI HIGH	675 [319] 950 [448] 1115 [526] 1270 [599]	655 [309] 930 [439] 1090 [514] 1250 [590]	635 [300] 905 [427] 1070 [505] 1225 [578]
07EBR01 07NBR01	11 x 7 [279 x 178]	1/2 [373]	LOW MED HIGH	1245 [588] 1555 [734] 1810 [854]	1220 [576] 1515 [715] 1755 [828]	1195 [564] 1475 [696] 1705 [805]	1165 [550] 1435 [677] 1645 [776]	1135 [536] 1395 [658] 1585 [748]	1105 [522] 1350 [637] 1530 [722]	1065 [503] 1300 [614] 1470 [694]
10ECR01	11 x 10 [279 x 254]	1/2 [373]	LOW MED HIGH	1295 [611] 1645 [776] 2045 [965]	1275 [602] 1615 [762] 2000 [944]	1250 [590] 1580 [746] 1955 [923]	1225 [578] 1550 [732] 1905 [899]	1195 [564] 1510 [713] 1845 [871]	1165 [550] 1465 [691] 1785 [842]	1135 [536] 1425 [673] 1720 [812]
10NDR01	11 x 10 [279 x 254]	3/4 [559]	LOW MED HIGH	1645 [776] 2045 [965] 2320 [1095]	1615 [762] 2000 [944] 2260 [1067]	1580 [746] 1955 [923] 2200 [1038]	1550 [732] 1905 [899] 2130 [1005]	1510 [713] 1845 [871] 2050 [972]	1465 [691] 1785 [842] 1985 [937]	1425 [673] 1720 [812] 1910 [901]
12EDR01 12NDR01	11 x 10 [279 x 254]	3/4 [559]	LOW MED HIGH	1645 [776] 2050 [967] 2365 [1116]	1635 [772] 2015 [951] 2310 [1090]	1615 [762] 1980 [934] 2250 [1062]	1590 [750] 1935 [913] 2185 [1031]	1560 [736] 1885 [890] 2115 [998]	1520 [717] 1835 [866] 2035 [960]	1470 [694] 1775 [838] 1950 [920]
15EDR01 15NDR01	11 x 10 [279 x 254]	3/4 [559]	LOW MED HIGH	1620 [765] 2010 [949] 2340 [1104]	1595 [753] 1985 [937] 2275 [1074]	1570 [741] 1960 [925] 2215 [1045]	1545 [729] 1915 [904] 2145 [1012]	1515 [715] 1850 [873] 2080 [982]	1480 [698] 1800 [850] 2010 [949]	1440 [680] 1730 [816] 1940 [916]

[] Designates Metric Conversions

Before proceeding with installation, refer to installation instructions packaged with each model, as well as complying with all Federal, State, Provincial, and Local codes, regulations, and practices.

WEATHERKING L.L.C.

5600 Old Greenwood Road, Fort Smith, Arkansas 72908



"In keeping with its policy of continuous progress and product improvement, WeatherKing reserves the right to make changes without notice."